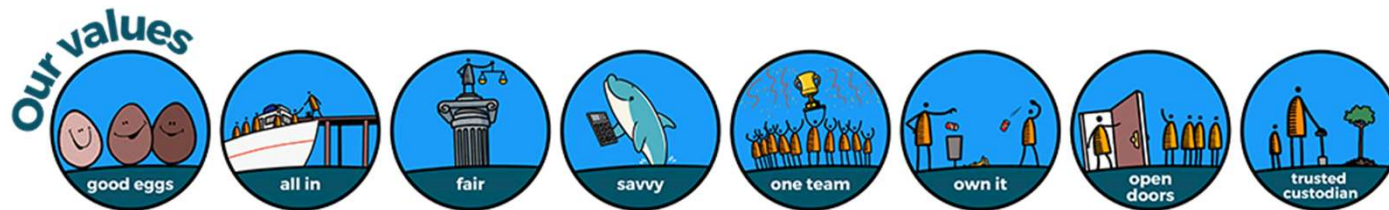




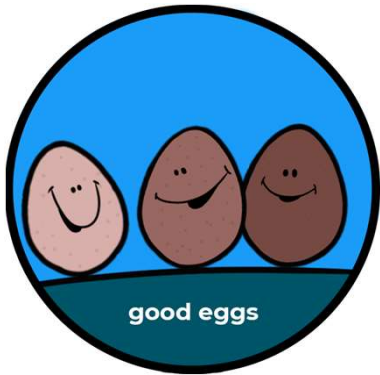
Shoreham Port: History & Evolution to a Thriving Modern Port

Friday 17th May 2024

Brian Rousell : Director of Engineering & IT



Our Values



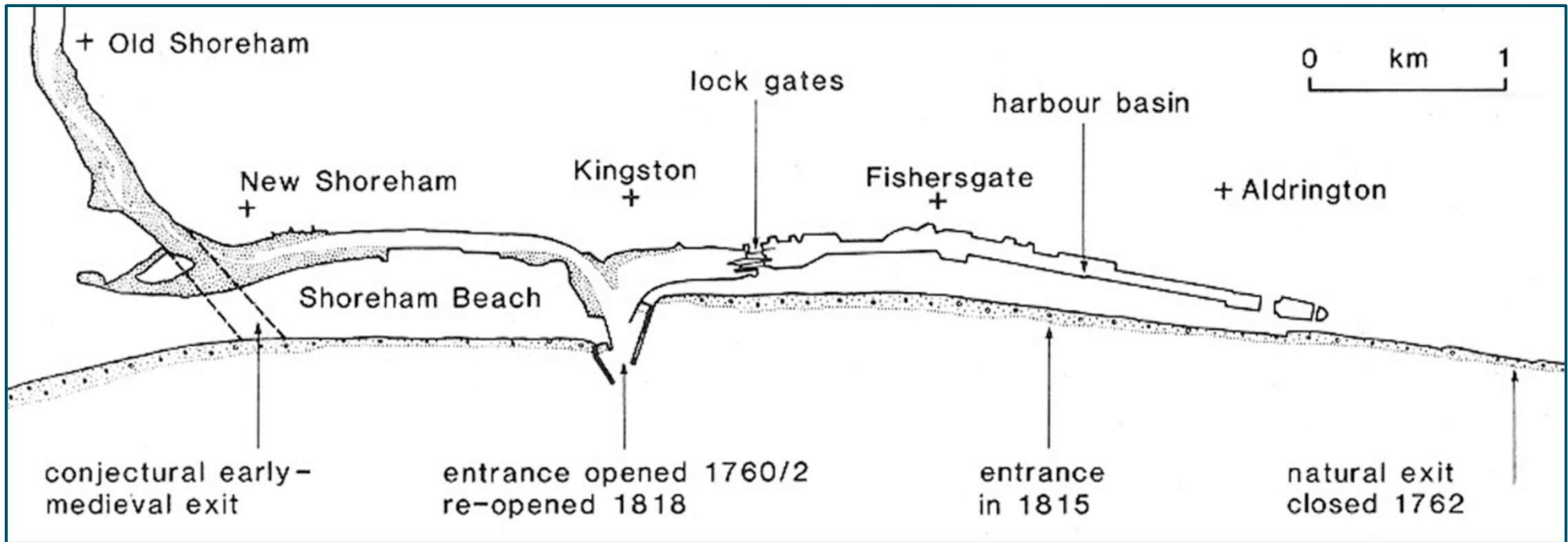
Masterplan 2023



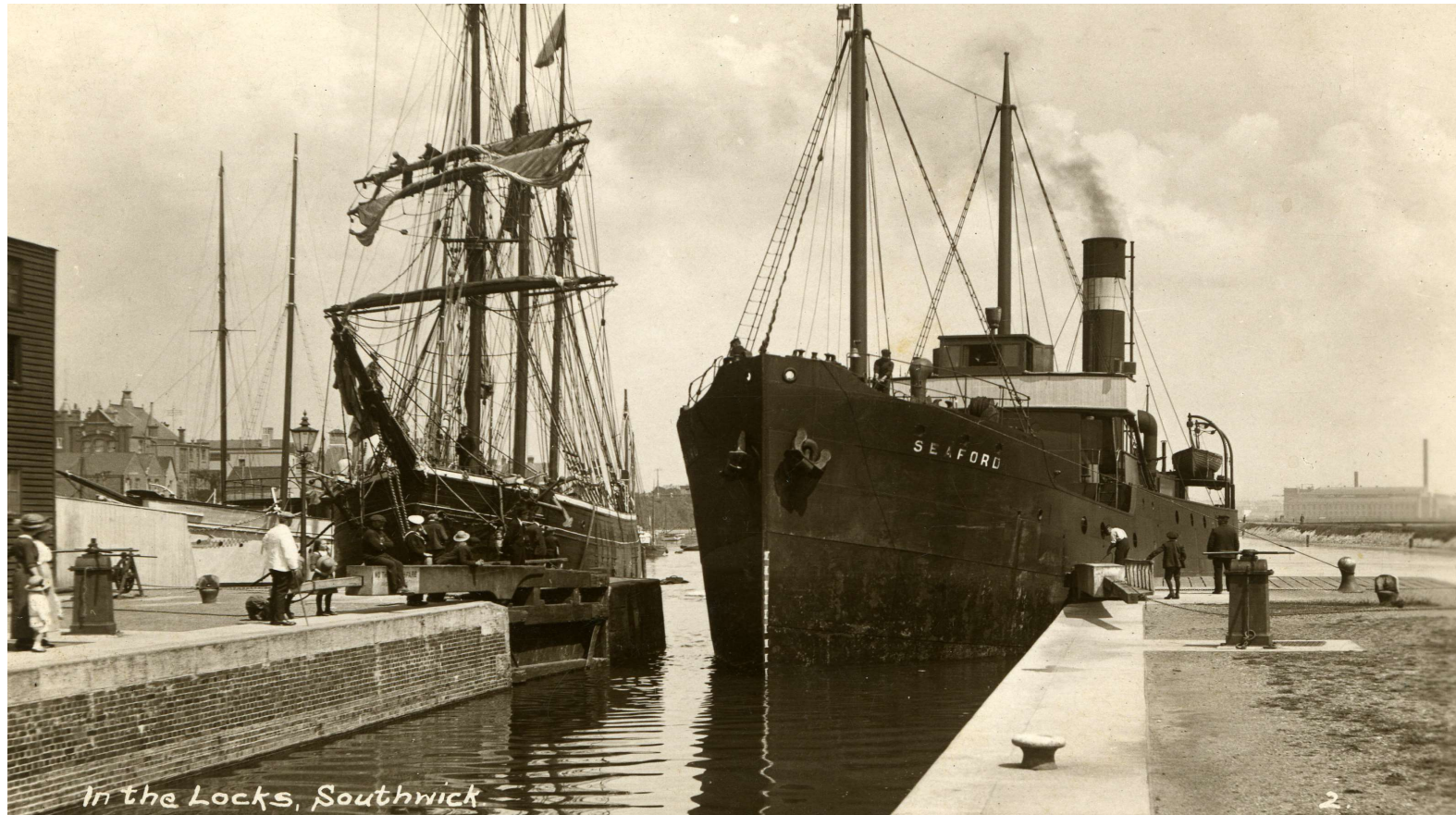
1. All home safe and well daily.
2. Our Trust Port will grow by focusing on the needs of new and existing leisure, fishing, and commercial users.
3. Increasing profitability will enable us to invest in people, infrastructure, and revenue growth.
4. Our working quays will be the centre for our varied and customer focused commercial cargo operation.
5. Our estate will continue to be a vibrant location for businesses.
6. We will continue to create collaborative relationships with our conservation, community, charity, education and local authority partners.
7. We will continue to create an empowering, flexible and diverse culture leading our people to be their best.
8. We will achieve Net Zero (scope 1 & 2) by 2035 through creating a green energy ecosystem at the Port.



When 12 “Commissioners” met in the Star Inn...



Locks, Docks & Tides



One of the first “Electric Light” stations



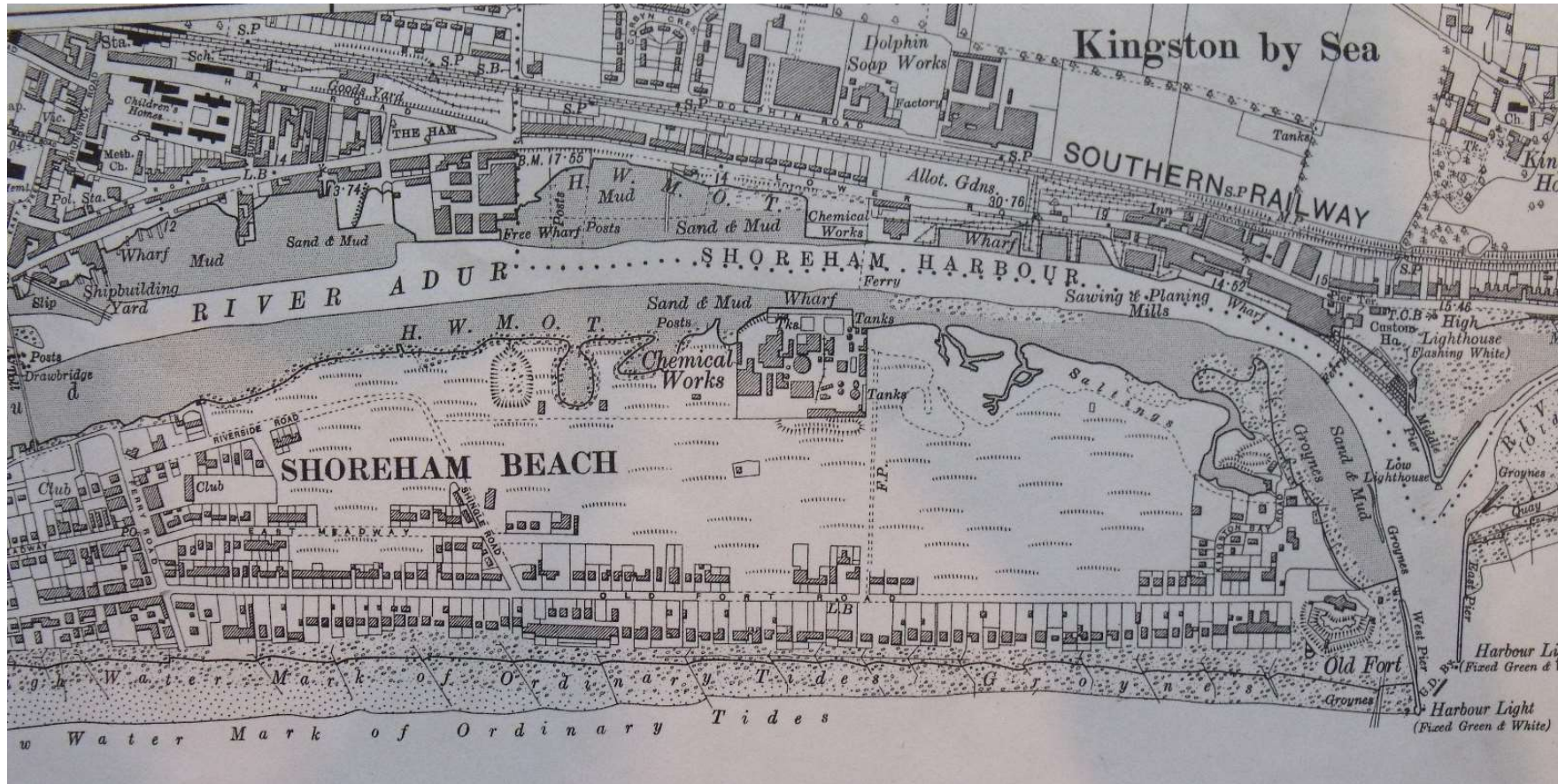
LAYING TRUNK CABLES TO THE NEW POWER STATION.



PIRRIE TRANSPORTER DISCHARGING COAL.



Brighton booms



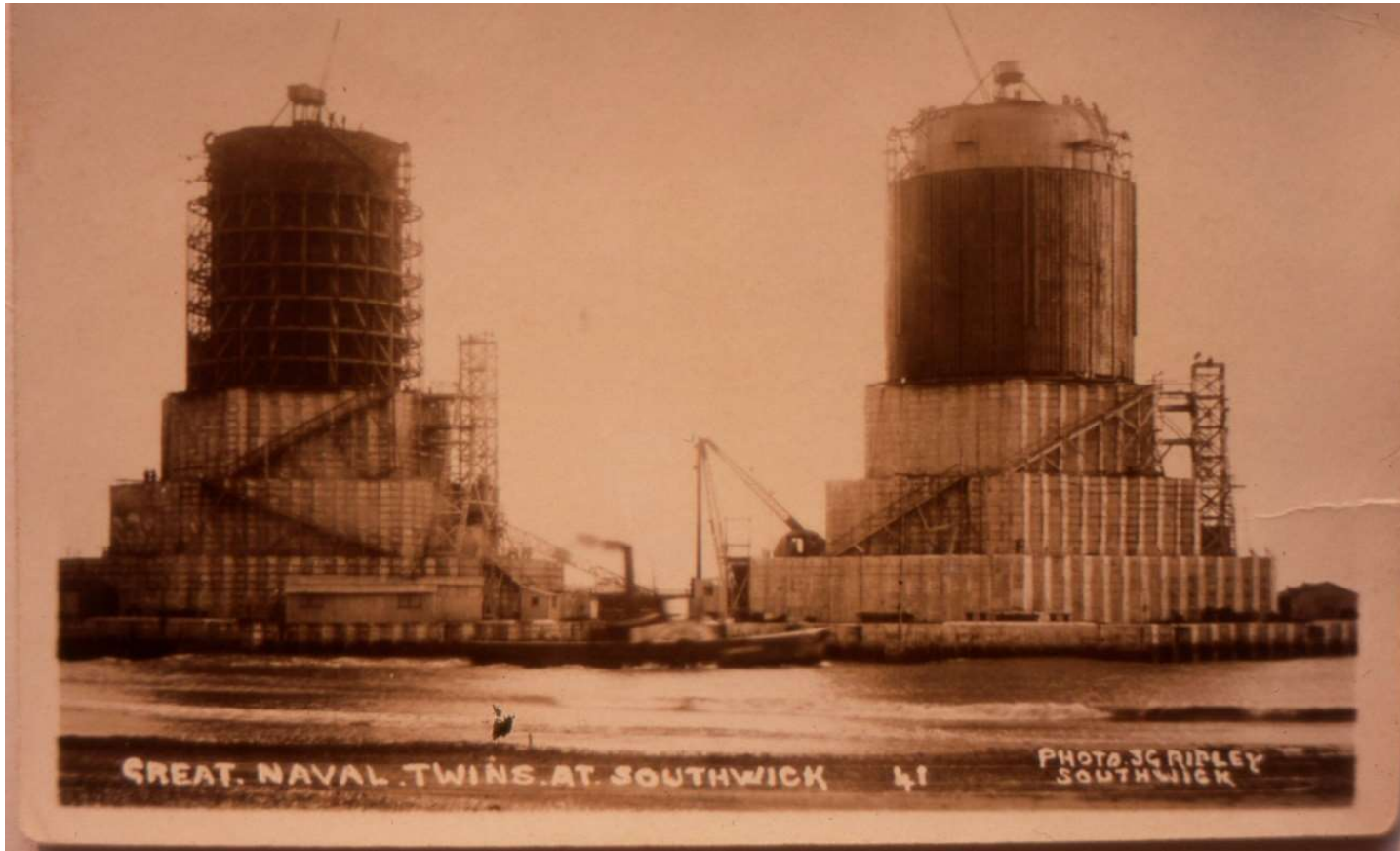
Generations of electrical generation



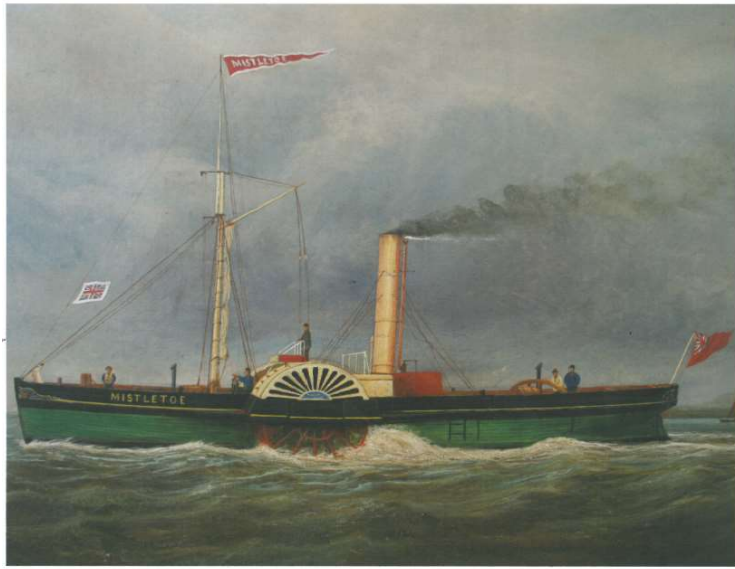
Energy & Environment



Wartime



Goods in / Goods out



Goods in / Goods out - timber



Goods in / Goods out - steel



Goods in / Goods out - aggregates



Goods in / Goods out - grain



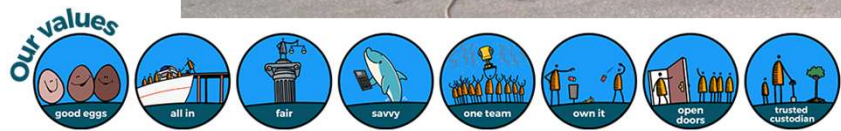
Goods in / Goods out - fuel



Goods in / Goods out - bulks



Goods in / Goods out – project cargoes



Goods in / Goods out - fish



Leisure



Shoreham Port Today

- Trust Port for over 260 years.
- Growing rapidly – 60% revenue increase in last decade.
- Highly diverse organisation.
- Around 2m tonnes of commercial cargo handled per year.
- 15,000 leisure movements per year.
- 3rd largest port by value for fish landings in England.
- Fast approaching 200 direct colleagues.
- Extensive onsite renewable energy generation.
- Eco-Port status for 10 years.



Recent Projects



Lady Bee Studios



- Two-story modular offices.
- Overlooking Lady Bee Marina.
- Ideal for start-ups and small businesses.



PORT KITCHEN

shoreham port



Dry Dock

- Seafood Infrastructure Fund - Round 1 grant funding.
- Project was completed on time and in budget.
- Fishing vessels were our first customers.



FISHING NEWS
 5 October 2023 £3.50 THE VOICE OF THE INDUSTRY SINCE 1913 fishingnews.co.uk

INDUSTRY UNITED AGAINST COD ADVICE SEE PAGE 3

Shoreham dry dock back in business

Four Sons joins SW fleet

THE MAGDOUFF SHELLFISH scallop Glendevren BM 100 was the first vessel to use the newly reopened dry dock in Shoreham, which has just completed a major refurbishment and modernisation. Originally built in 1950 as the first ever lock gate in Shoreham Harbour, it was converted to a dry dock in the region. Thirty years later, with the dry dock rapidly ageing, the Trust Port at Shoreham successfully bid for UK Seafood Infrastructure Fund (SIFF UKSF) funding, which provided three-quarters of the £31,000 refurbishment costs.

Director of engineering Brian Rowell told FNV: "We were acutely aware in developing the business case for the refurbishment that many of the scallopers that work from Shoreham during their September to March season were being forced to use dry dock facilities on the other side of the Channel.

"The repaired dry dock now means that they can reduce their fishing time that costs and expenses by having the work done in Shoreham, which makes sense both financially and environmentally. We're investing in additional solar power

to complement the harbour's existing wind turbines, so further reduce environmental footprints."

"The Glendevren was expected to be in the dock for no more than 48 hours. The newly installed pumps mean that we have an exceptionally flat turnaround time now," said Brian.

"A full drain-down of the facility that could take up to eight hours can now be achieved in around three, which again makes the facility attractive to fishing vessel owners wishing to lose as little sea time as possible."

The new Four Sons on sea trials before her delivery trip to Bristol.

The latest multi-purpose under-10m trawler built at the Corby yard of C. Toms & Son, the order was initially placed by Roger Flynn, head of H&J Fishing Ltd.

Owned and skippered by David Mansfield, the vessel is named Four Sons BM 66. Its official naming ceremony will take place shortly at its home port of Bristol.

It is the latest build of the popular design from Ian Peates.

Continued on page 2

Barcode: 0 00218 25232 2

SARDINE EXCHANGE
 Australian and Cornish skippers trade know-how in Newlyn See page 9

5 October 2023 FISHING NEWS | 1



Prince Philip Lock Gates

- c£753k spent over the last 2 years for the Prince Philip lock gate refurbishment.
- A further £315k will be spent in 2024.
- Trialling new, wider walkway that will hopefully be replicated at the other end



Upcoming Projects



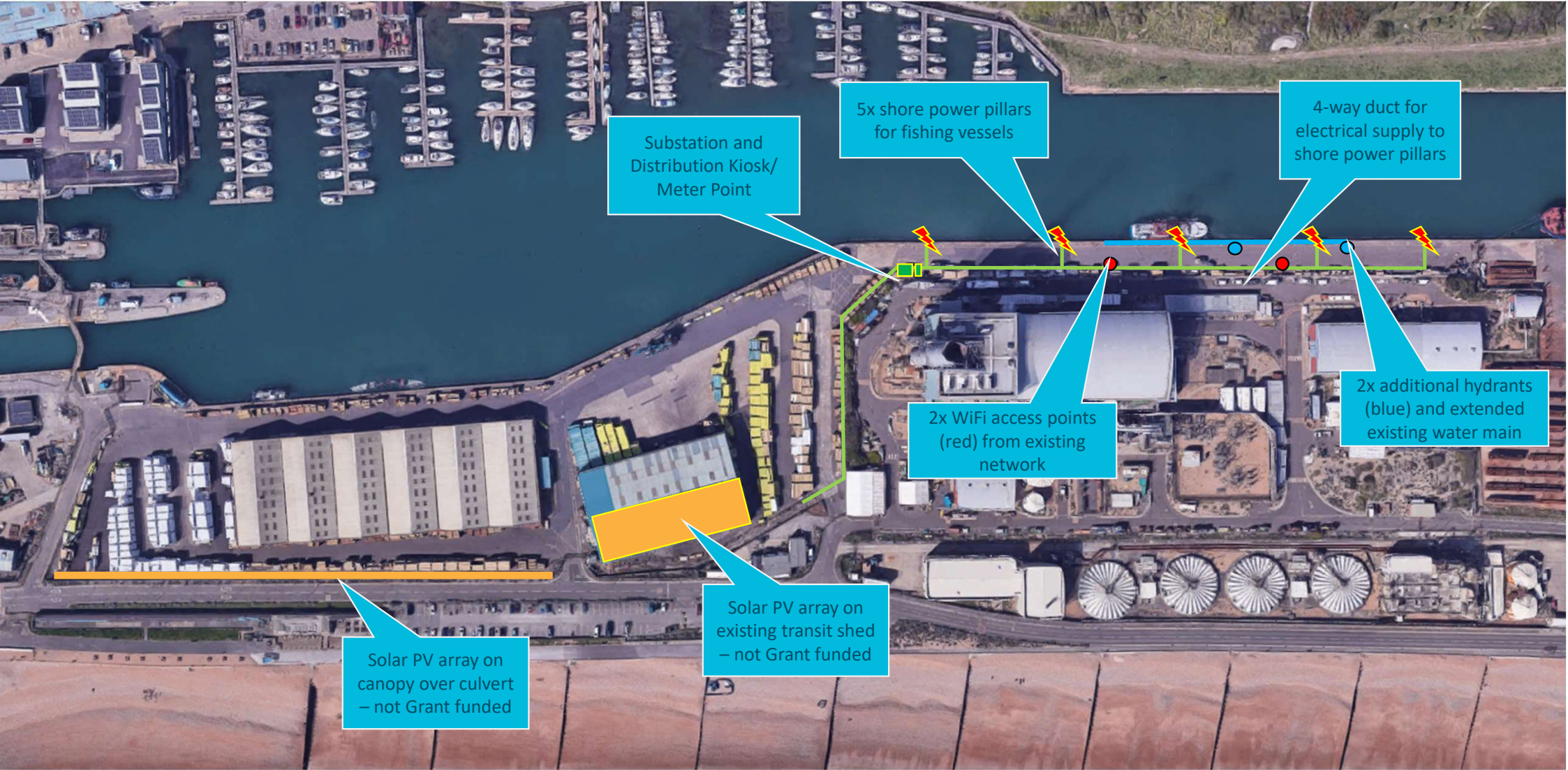
Fishersgate Marina



- Seafood Infrastructure Fund Round 2 grant funding.
- Increased berthing capacity to 52 vessels.
- Shore power for all berths.
- 2 x davits.
- Shoreside welfare facilities.



UKSF Round 3 – BERTH ZERO at Shoreham Port



Substation and Distribution Kiosk/ Meter Point

5x shore power pillars for fishing vessels

4-way duct for electrical supply to shore power pillars

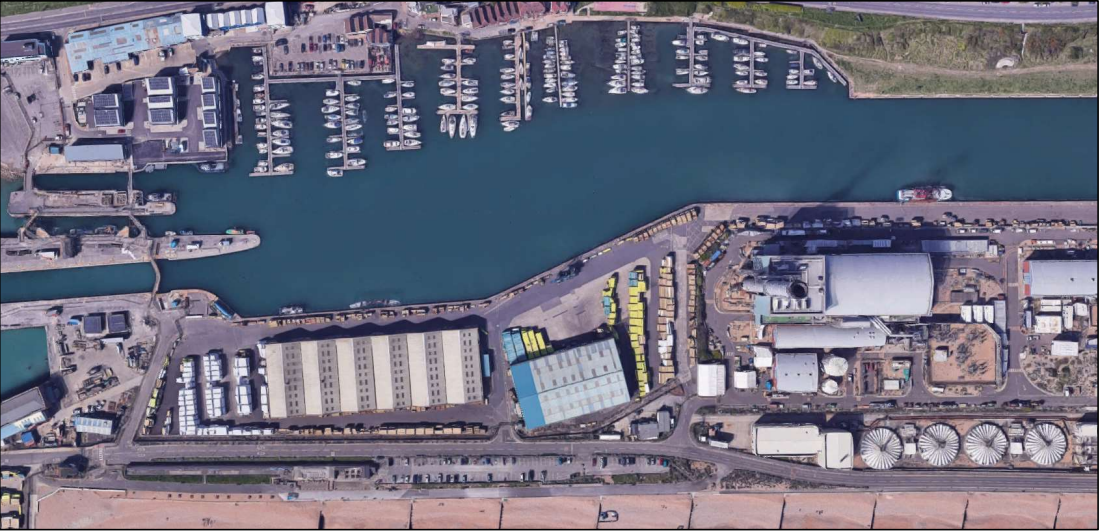
2x WiFi access points (red) from existing network

2x additional hydrants (blue) and extended existing water main

Solar PV array on canopy over culvert – not Grant funded

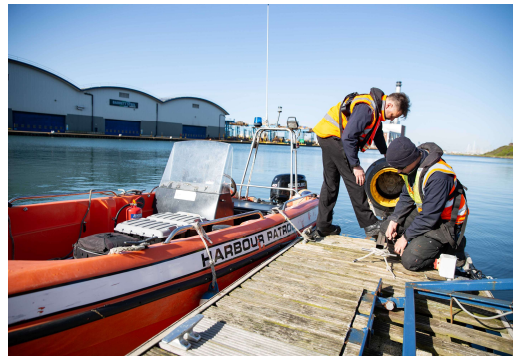
Solar PV array on existing transit shed – not Grant funded

Beach Huts (Phase 2)

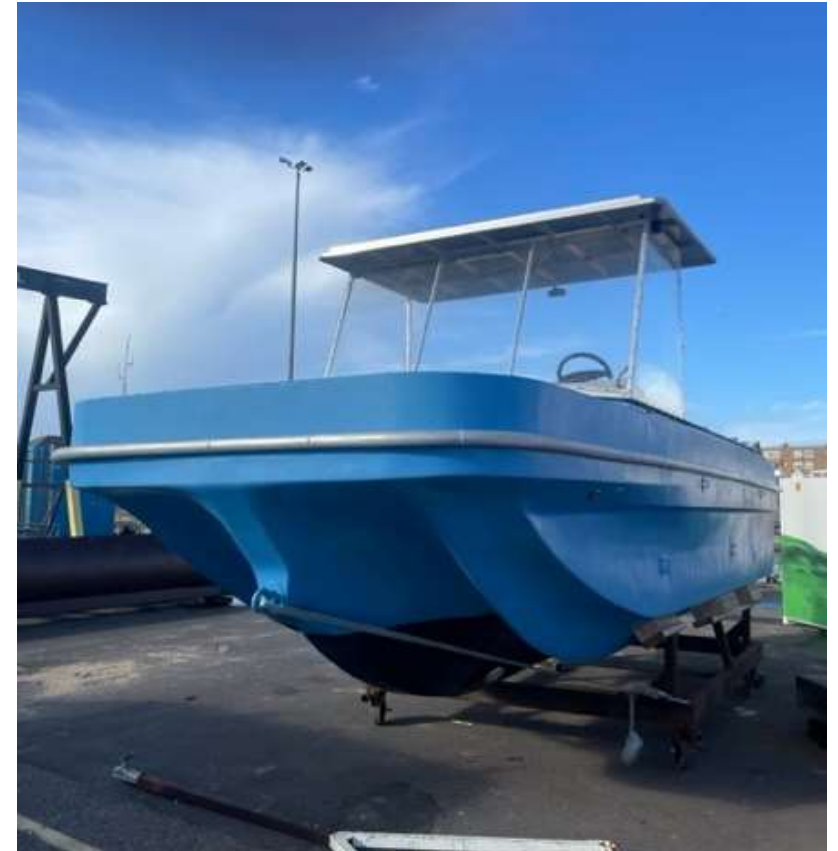


Our path to Net Zero

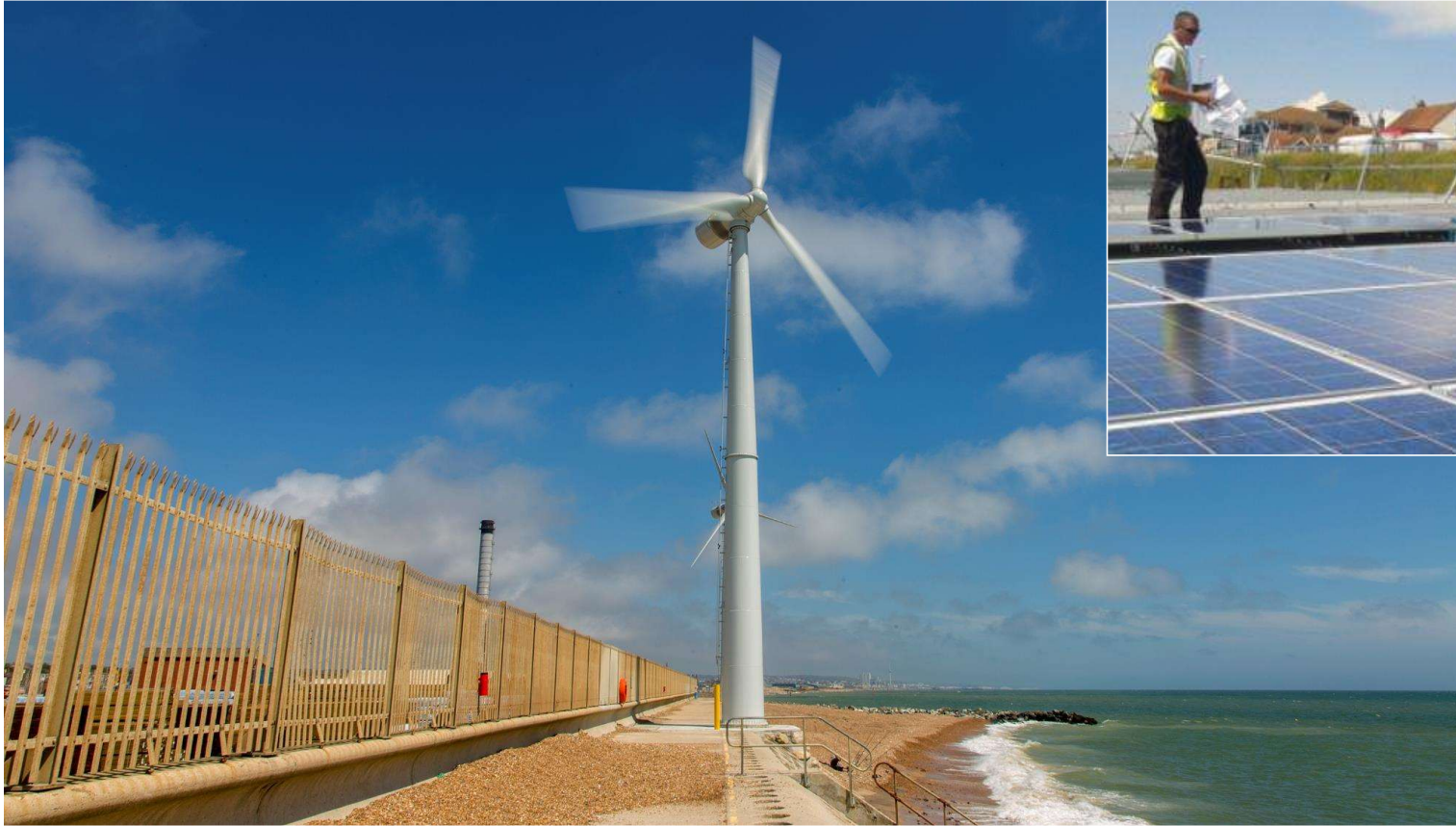
- Shipping remains the most carbon efficient method (CO2 per tonne) of transporting freight .
- Our goal: To achieve Net Zero (Scope 1 & 2) by 2035.



Energy - electrification



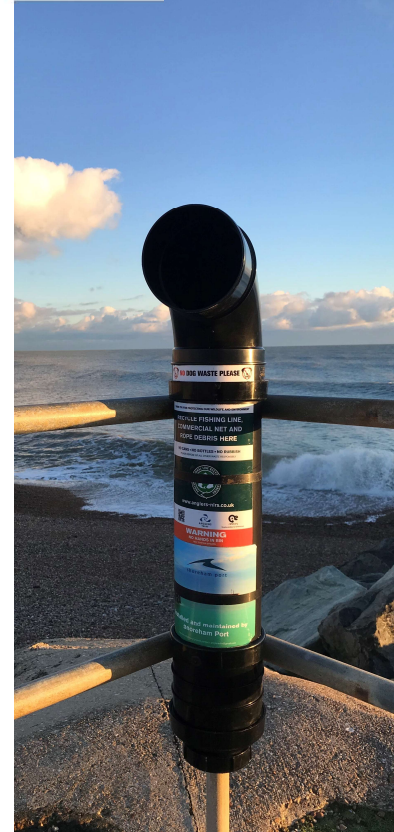
Energy - renewables



Greater renewables opportunities

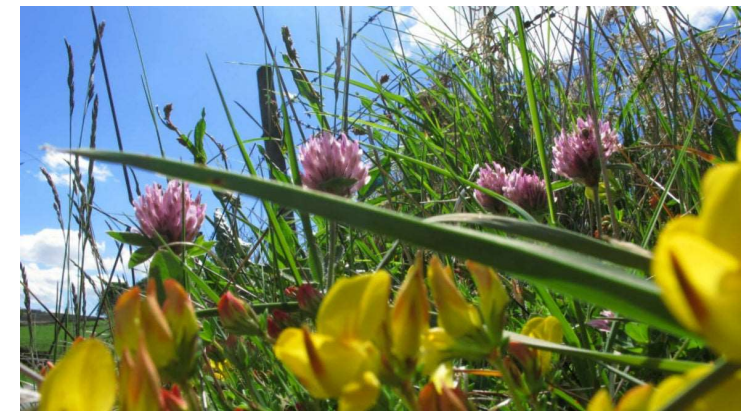
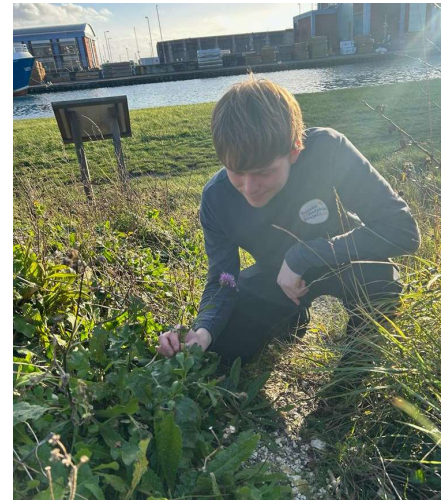


Recycling



Sussex Dolphin Project

- Committed to protecting dolphins through research, awareness & education.
- Fourth year of partnership with the Port.
- Management and rewilding of our Conservation Corridor.
- Marine mammal awareness.
- Sustainability Week.

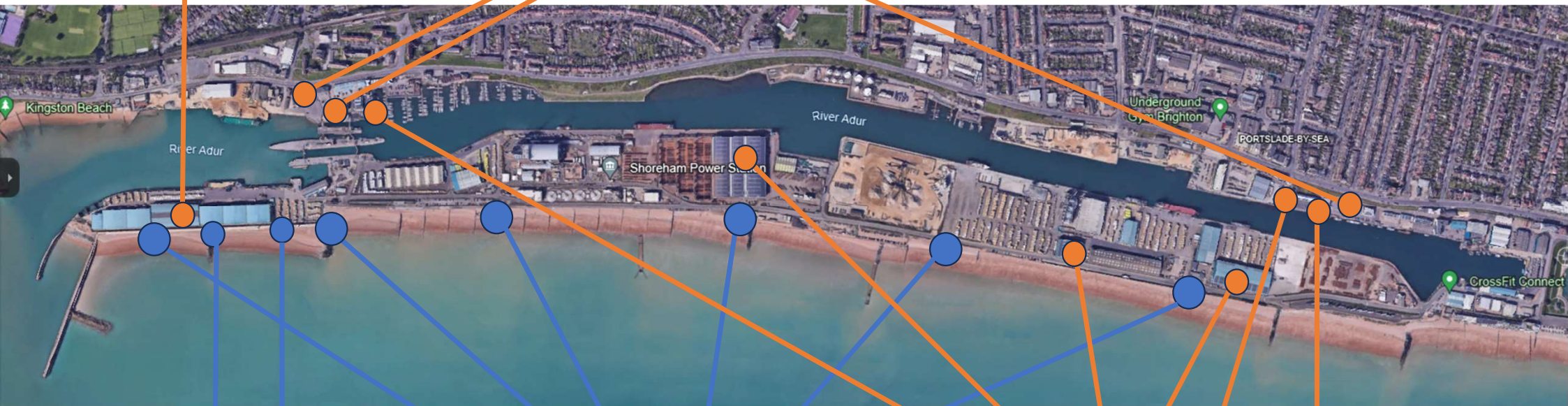


Renewable Energy



Opportunity: 1400kWp

New: 110kWp



Established: 200kWp

Opportunity: 6MW

Established: 2410kWp

Questions



Stay in Touch



Save the date:

Annual Public Meeting: Tuesday 11th June 2024

Sustainability Week: Wednesday 3rd – Saturday 6th July 2024

www.shoreham-port.co.uk

Contact us: info@shoreham-port.co.uk

Search 'Shoreham Port' on Facebook, Twitter and LinkedIn





Our values

-  good eggs
-  all in
-  fair
-  savvy
-  one team
-  own it
-  open doors
-  trusted custodian